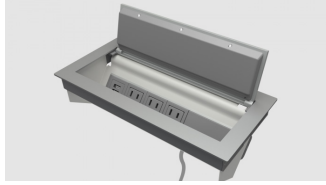


# KITA II + WIRELESS POWER MODULE SPEC SHEET



Kita II + Wireless  
3 power, 1 dual USB-A  
Matte Storm powder coated aluminum with white finish, black cord



Kita II + Wireless  
2 power, 1 dual USB-A, 1 open data  
Matte White powder coated aluminum with white finish, black cord

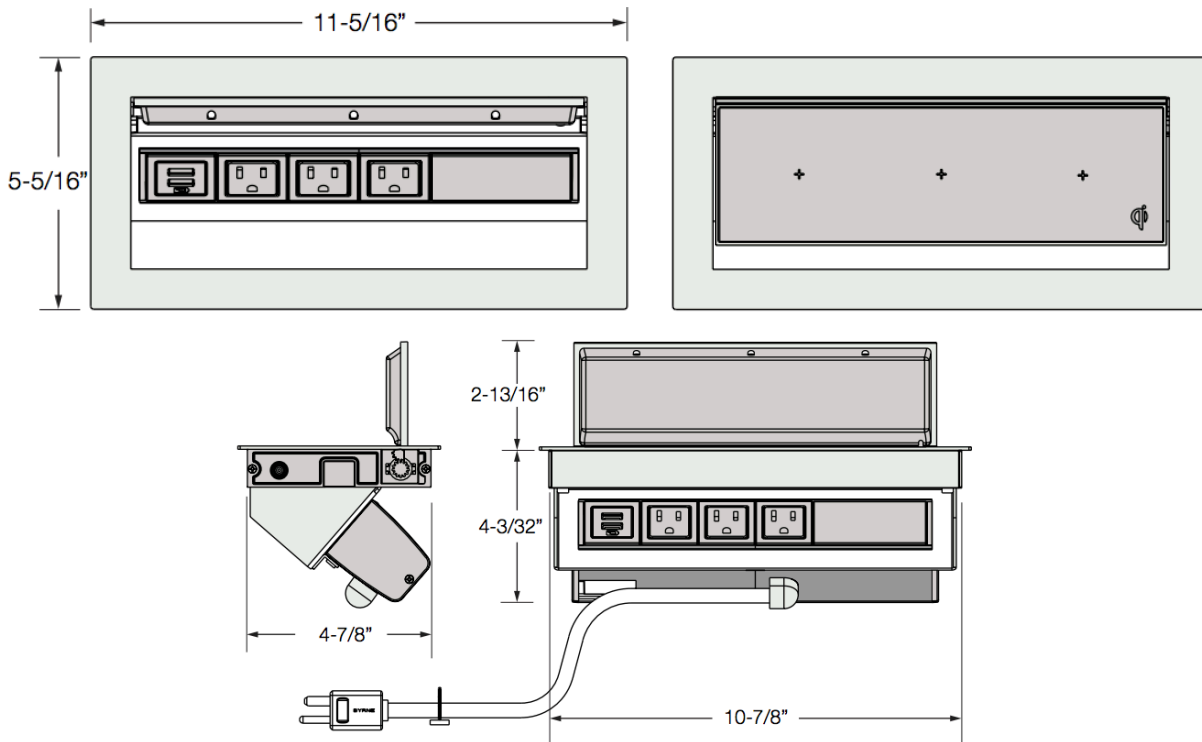


Kita II + Wireless  
2 power, 1 USB-A+C, 1 open data  
Matte Black powder coated aluminum with black finish, black cord

## Specifications

UL Listed

Number of ports: 6 ports



## Cut Out Dimension

10-7/8" x 4-7/8"

minimum surface depth 3/8" - maximum surface depth 1-1/2"

## Finish Options

**MS** Matte Storm powder coated aluminum with matte storm simplexes, window frames and end cap, white faceplate, black cord.

**MW** Matte White powder coated aluminum with matte white simplexes, window frames and end cap, white faceplate, black cord.

**MB** Matte Black powder coated aluminum with matte black simplexes, window frames and end cap, black faceplate, black cord.

## Cord Options

72 inches or 120 inches

SYMPHONY®

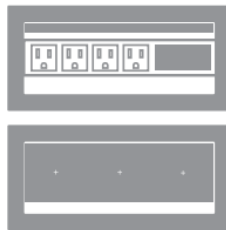
www.symphonytables.com

## Standard Features

- Seamless, one piece powder coated aluminum grommet that keeps cables out of sight, by allowing use while the lid is shut
- The lid is equipped with three (10 Watt) Qi charging coils, capable of charging up to 3 smart phones at a time
- Offered in a 6 window unit only, with 4 windows available for 15 Amp power and charging USB
- The lid comes with LED lights that change colors to indicate when a device is paired to one of the wireless receivers
- Qi Certified
- Requires a cut out in the worksurface
- Hardwired versions available

## Configuration Size

The unit has three (10 Watt) Qi charging coils built into the soft-closing lid of the product. Inside, there are 6 windows, 2 of which are taken up for the Qi power supply. The other 4 windows can be replaced by a variety of power or technology options.



## Integrated Technologies

The power simplexes must be grouped together and installed at the right end of this product. Technologies requiring power must immediately follow.



### NON-POWERED

Cat6, Cat6A, HDMI, DisplayPort, DVI, Mini DisplayPort, Stereo Jack, Belay, Passive USB-A and Passive USB-C

NOTE: Factory install only for DisplayPort and Mini DisplayPort

### POWERED

USB A+C, Dual USB, USB-4C, Dual C+A, Dual USB-C 45W, USB-C 60W, Retractable Charging Cord, Bluetooth® Speaker

NOTE: Powered technologies do not transfer data

### POWER SIMPLEX

Tamper Resistant & Hospital Grade Available