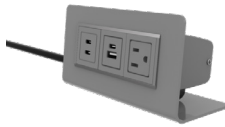


AYA F FREESTANDING POWER MODULE SPEC SHEET



Aya F 1 power, 1 USB-A+C, 1 dual USB-C
Matte Storm finish



Aya F 1 power, 1 USB-A+C, 1 dual USB-C
Matte White finish



Aya F 1 power, 1 USB-A+C, 1 dual USB-C
Matte Black finish



Aya F 2 power, 1 USB-A+C, 1 dual USB-A
Matte Storm finish



Aya F 2 power, 1 USB-A+C, 1 dual USB-A
Matte White finish

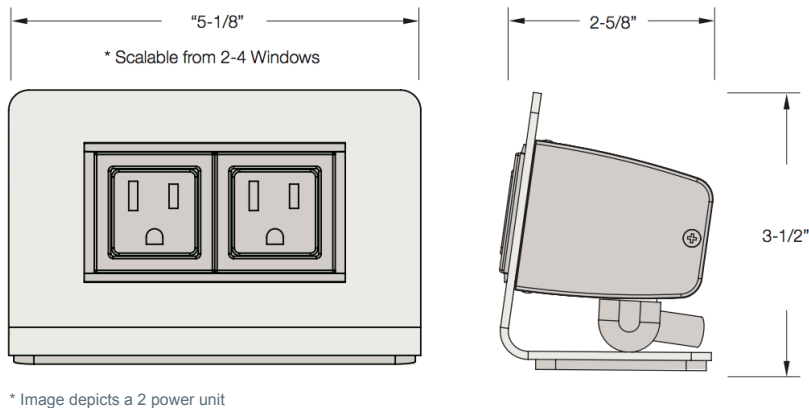


Aya F 2 power, 1 USB-A+C, 1 dual USB-A
Matte Black finish

Specifications

UL Listed

Number of ports: 2-4 ports available



Finish Options

- MS** Matte Storm faceplate, plastic end caps & window frames, Clear Anodized Aluminum housing, black cord
- MW** Matte White faceplate, plastic end caps & window frames, Clear Anodized Aluminum housing, white cord
- MB** Matte Black faceplate, plastic end caps & window frames, Clear Anodized Aluminum housing, black cord

Cord Options

72 inches or 120 inches

Standard Features

- Freestanding, monument style accessory
- Available in 2,3, or 4-port sizes, so it's perfect for personal use or shared workspaces
- Plug in laptops, phones, tablets easily – without reaching under the table.
- Constructed out of anodized aluminum with a powder coated faceplate offered in multiple finish options.
- Corded

SYMPHONY®

www.symphonytables.com

Customized By Size

Comes with 2 to 4 windows, as shown below. Each window can be replaced by a variety of power and technology options.



Integrated Technologies

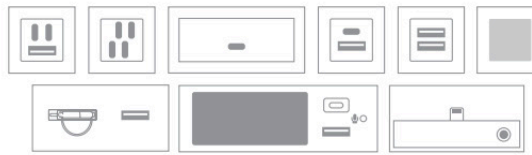
The power simplexes must be grouped together and installed at the right end of this product. Technologies requiring power must immediately follow.



NON-POWERED

Cat6, Cat6A, HDMI, VGA, DisplayPort, DVI, Mini DisplayPort, Stereo Jack, Belay, Passive USB-A, and Passive USB-C

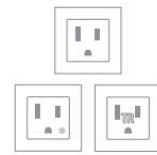
NOTE: Factory install only for DisplayPort and Mini DisplayPort



POWERED

Quad C, Dual C+A, USB-C 60W, USB A+C, Dual USB, Embrava®, Retractable Charging Cord, Bluetooth® Speaker

NOTE: Powered Technologies do not transfer data



POWER SIMPLEX

Tamper Resistant & Hospital Grade Available